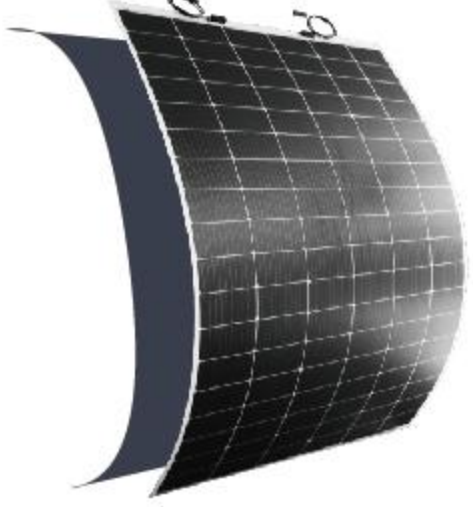


轻质光伏组件 Flexible Solar Panel



- Systematic
- Easy Installation
- Multi-Compatibility
- Flexible & Lightweight
- High efficiency & Stability

Flexible solar panel can be combined into multi scenario applications to generate electricity . The characteristic of the panel have lots of priorities compare with normal panel . It can be bent to 135 ° ; the weight is only 3Kg / m² ; it can be mounted to surface directly . When we install the panel on rooftop , wall and packing shed etc . , it can save 50% manpower cost and 30% material cost.

Cause by the weight is only 25% of normal panel , it can be installed directly to the old buildings which the load bearing capacity does not meet the requirements . It can be installed on the wall of buildings without bracket support.

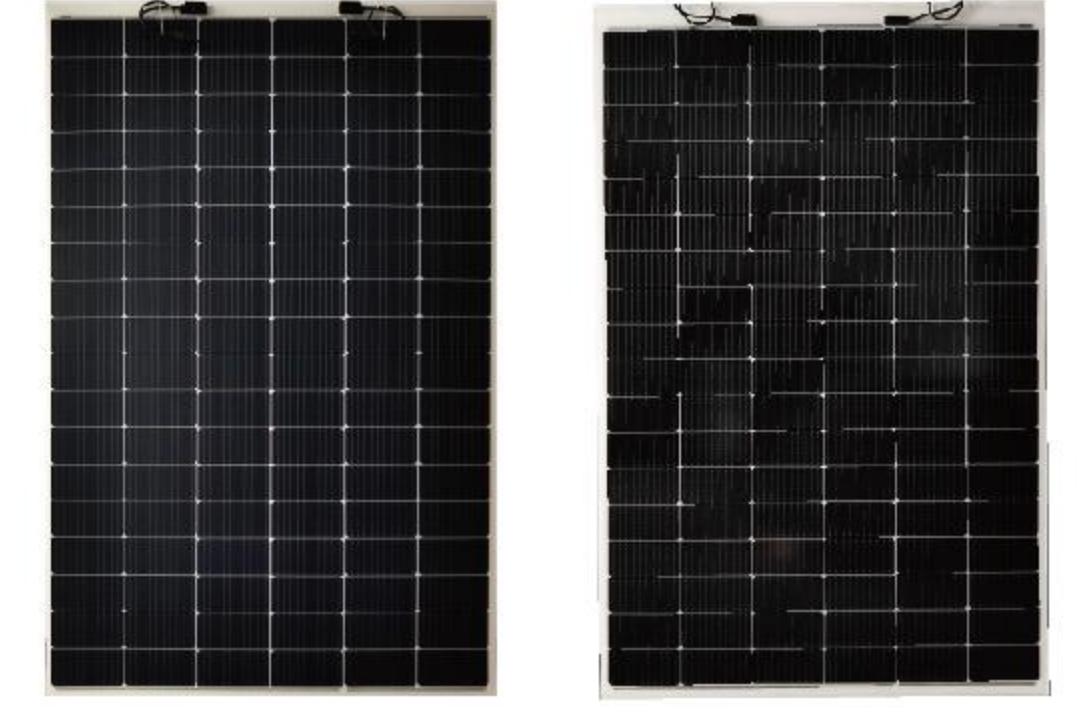
The flexible panel can be mounted onto the curved shape surface like rooftop , packing shed , car roof surface etc. The panel integrated with the target buildings or car. It can improve safety performance and make the appearance more beautiful.

The flexible solar panel is a new application in PV industry, it will bring a better life experience in new energy usage.

TELECTRICAL CHARACTERISTICS	
STC	AP-400-FBPC
Maximum Power (P _{max})	400W
Maximum Power Voltage (V _{mp})	30.7V
Maximum Power Current (I _{mp})	13.03A
Open-circuit Voltage (V _{oc})	37.1V
Short-circuit Current (I _{sc})	13.66A
Module Efficiency (%)	20.2%
Operating Temperature	-40 °C to 85 °C
Maximum System Voltage	1500VDC
Maximum Series Fuse Rating	20A
Application Class	Class A
Power Tolerance	0+5W

STC: Irradiance 1000W/m² , module temperature 25°C , AM=1.5

Lightweight



Flexible PV

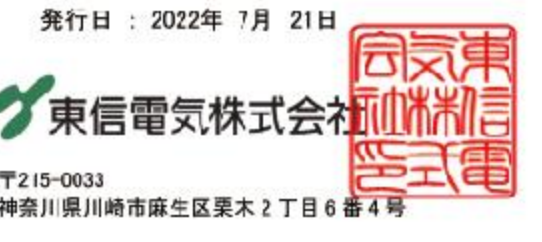
Glass Solar Panel

Lightweight solar panel has the polymer composites film and glass surface. The polymer composites film is 3Kg / m².

The glass surface is 6Kg / m². Both of them have been certified by TUV & CSA.



FINE-FLEX
耐風圧試験



Multi Scenarios

The characteristics of flexible and lightweight enable our product to most of scenes with higher safety and lower cost.



SCENE

PV Solutions
Mounted to Surface

Lightweight

With same performance, the weight of flexible panel is **only 25%** compare with normal solar panel.

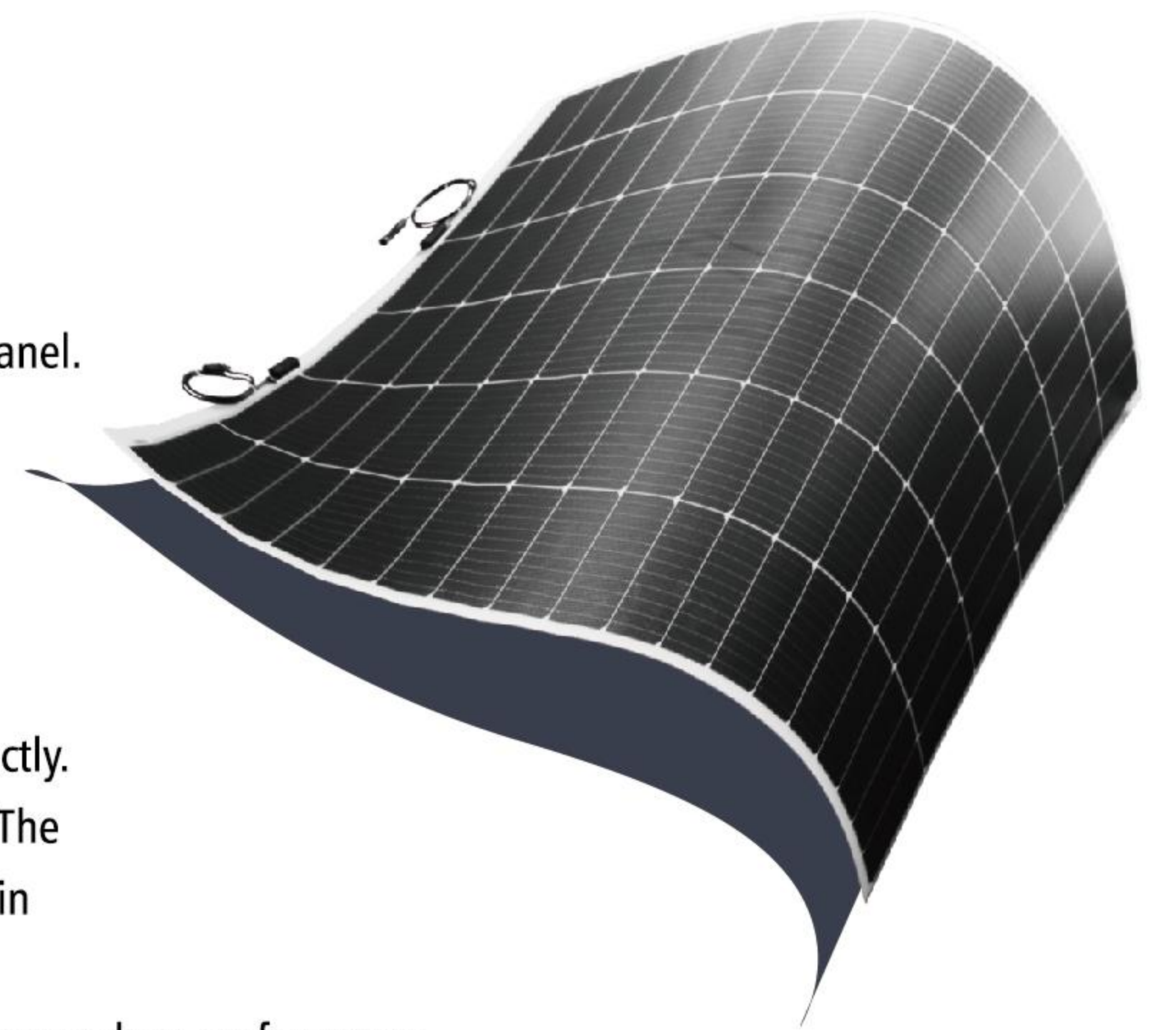
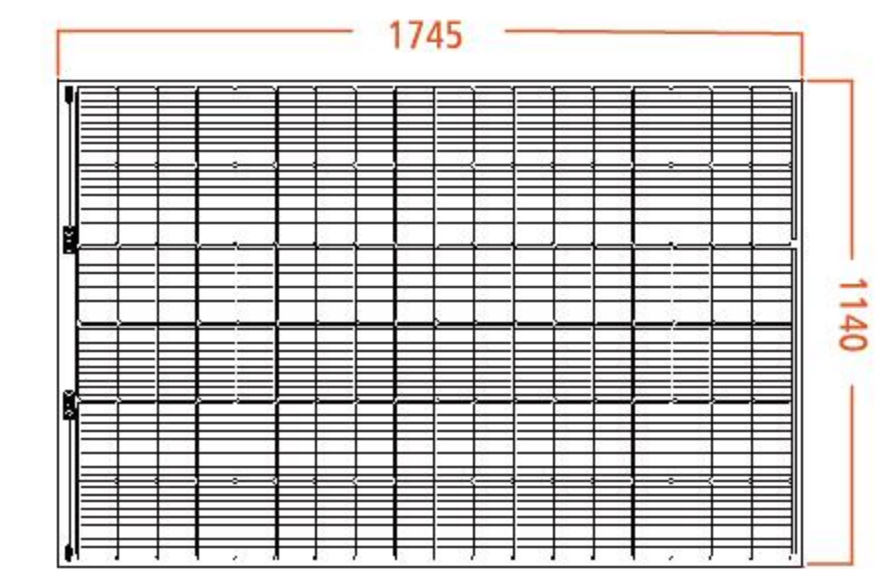
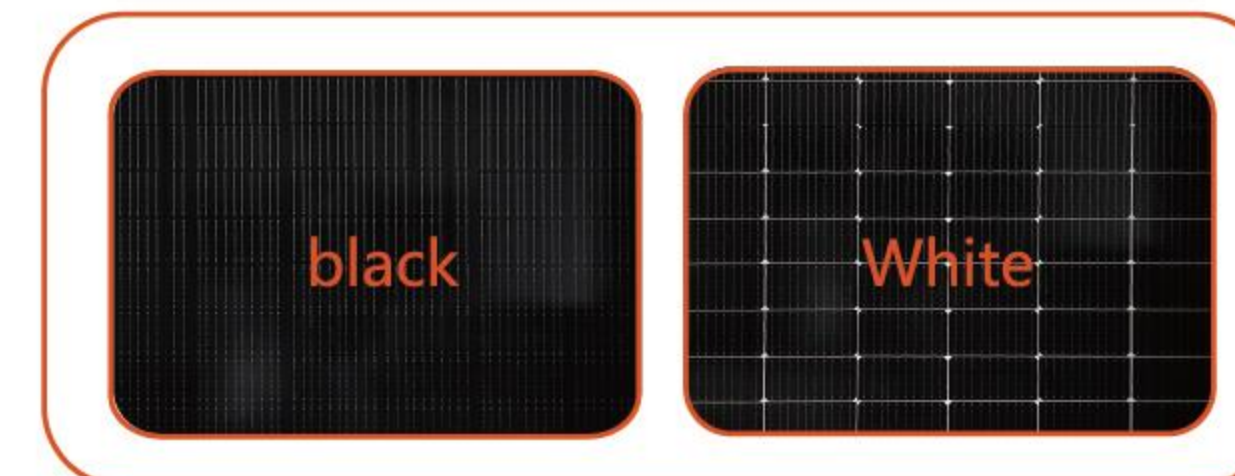
Easy installation

Without bracket support, mounted to surface directly. The panel is more easy and quick to be installed. The installation method has passed the Fine-Flex test in Japan Laboratory.

It also has more priorities on **cost saving** and lower carbon performance.

Multi Color

In order to integrate the panel better with buildings or other scenes, we have **black** and **white** panels for customer choice. If the customer meet the quantity and cost requirement, it is possible for customization choice.



Cost & Value

The electricity price in Europe, Australian and Japan risen rapidly in recent years. Our product solved the installation area troubles and saved the installation cost. It generated the huge value to our customer.



- The purpose of AppliedPV products is to realize decentralized and independent energy supply.
- We provide the solution to use green energy to achieve the product functionality.

MECHANICAL CHARACTERISTICS	
Solar Cell	Monocrystalline silicon cell
No. of cells	108
Module Dimensions	L:1745*W:1140*H:18 mm
Weight	6.3 kg
Backsheet	White PV Backsheet
J-Box	IP 67
Output cables	4mm ²
Cable length	(+)(-)500mm
Connector	MC4 compatible

TEMPERATURE CHARACTERISTICS	
NOCT(Nominal Operating Cell Temperature)	45 ±2°C
Temperature Coefficient of P _{max}	-0.38%/°C
Temperature Coefficient of V _{oc}	-0.28%/°C
Temperature Coefficient of I _{sc}	0.020%/°C

PACKAGING	
Pieces per pallet	70
Container	20'GP
Pieces per container	420
Container	40'HQ
Pieces per container	1820

